

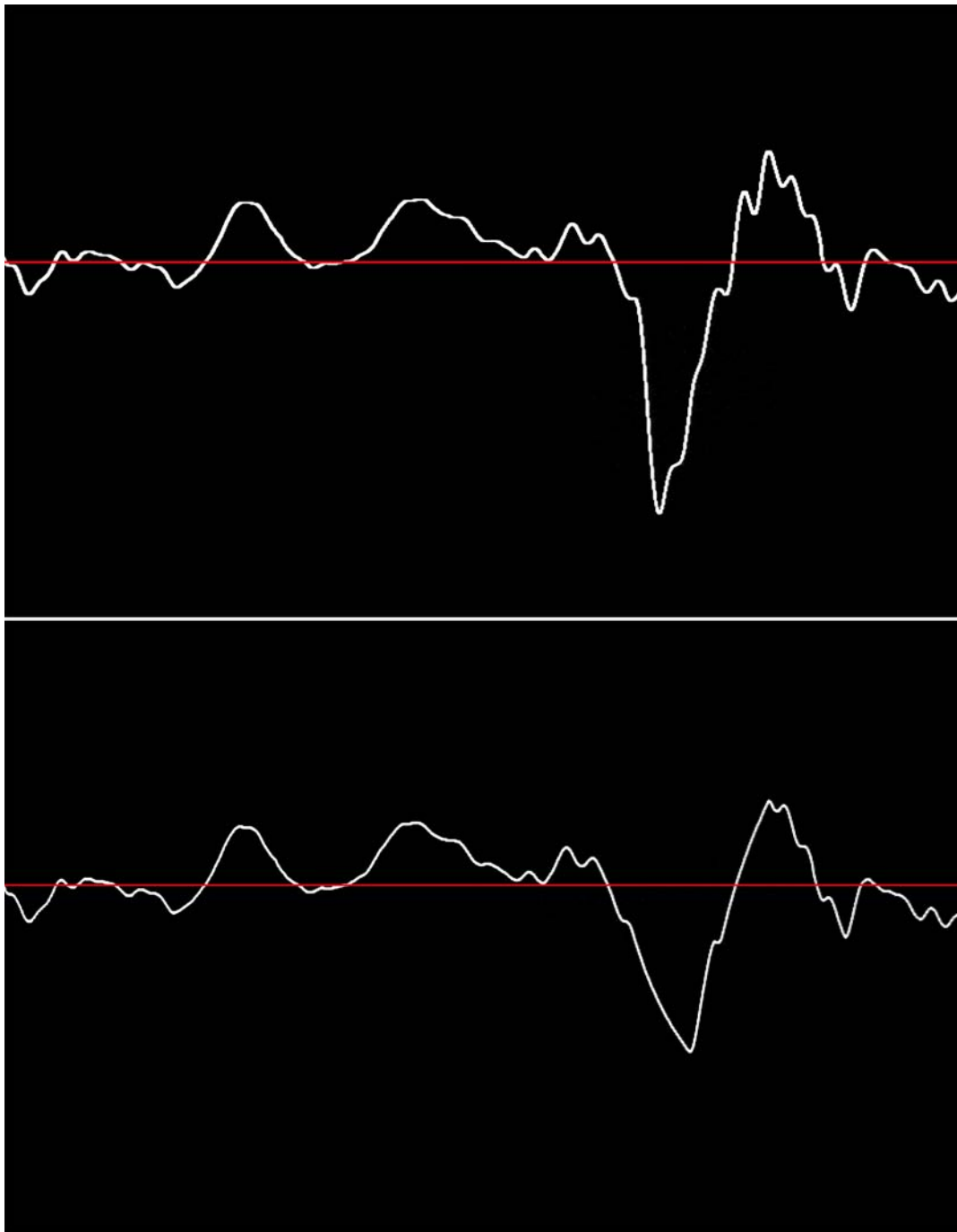
EUROPA 1

REFERENCE MEASUREMENTS

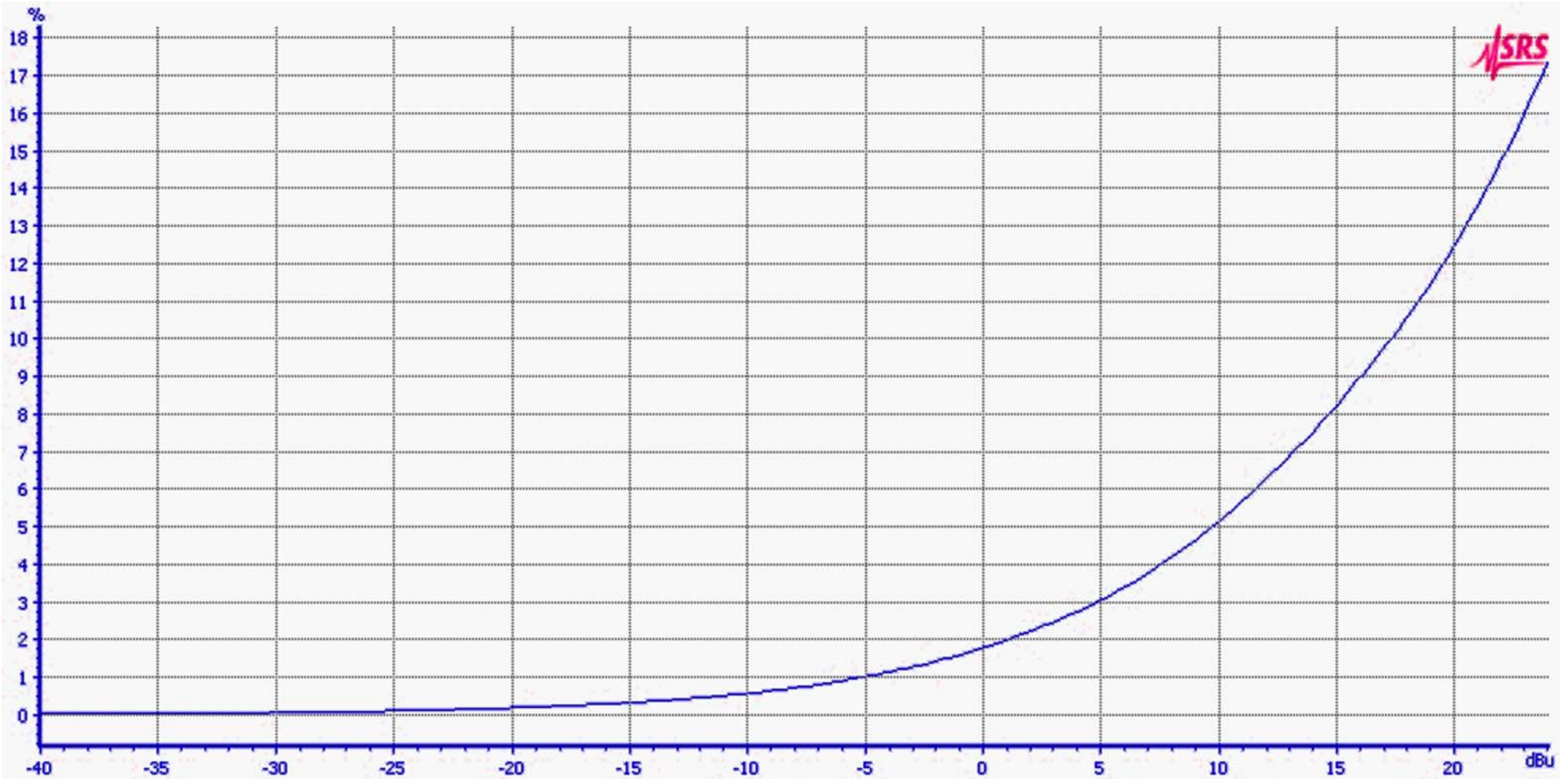
SIGNAL LEVEL	HARM 2	HARM 3	SPEED = 0	SPEED = 1	HARM 2 GAIN	HARM 3 GAIN
+24 DBU	17.3%	19.7%	15.5%	21.9%	-0.7DB	-0.7DB
+14DBU	7.6%	3.5%	16%	14.2%	0.9DB	2.9DB
+4DBU	2.8%	0.6%	1.3%	.05%	1.3DB	3.6DB
-6DBU	0.9%	0.2%	.04%	.03%	1.3DB	3.6DB

Gain change is referenced to having the color function off, it shows some compression with both the even and odd harmonic controls

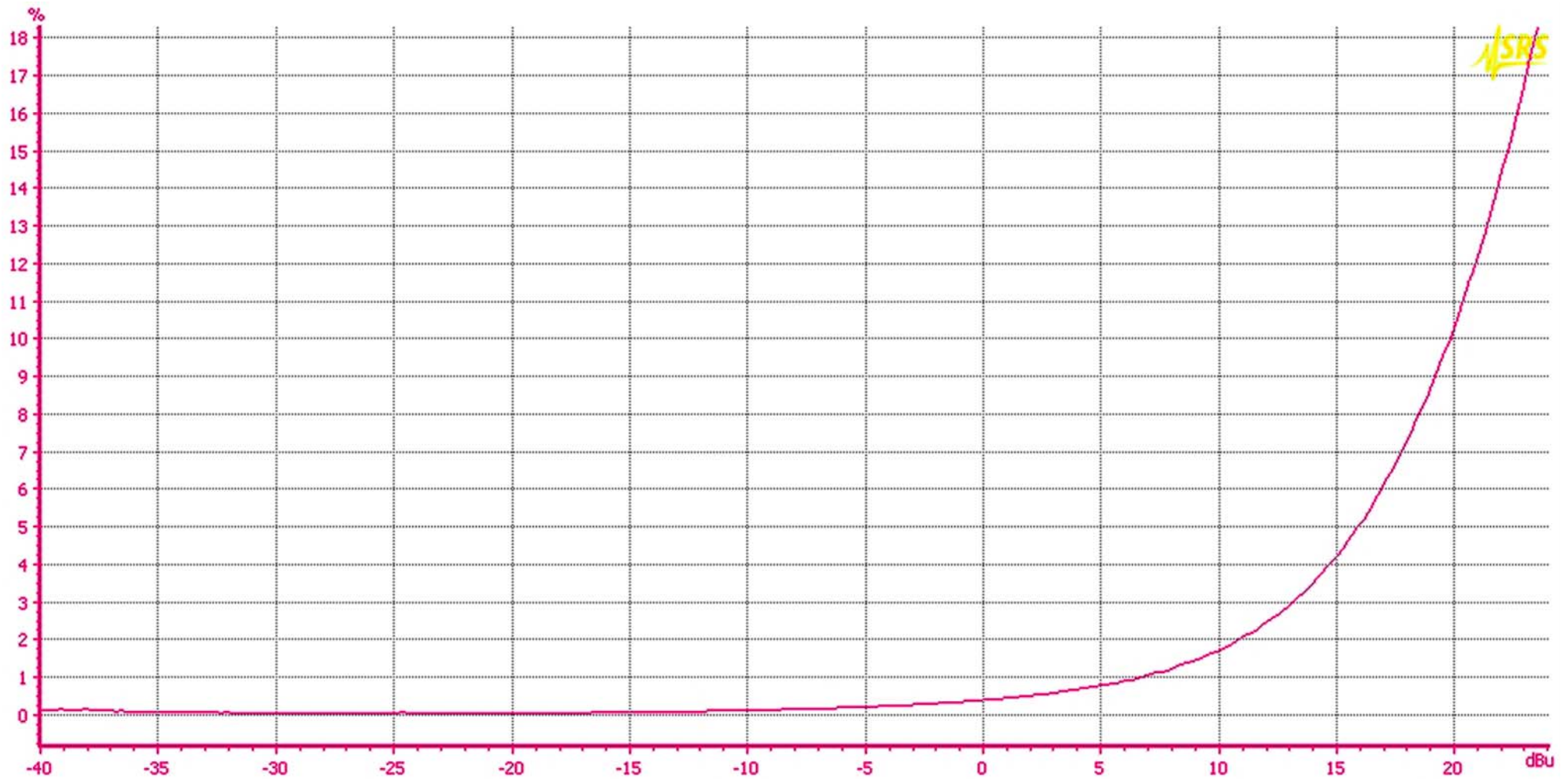
All distortion wave measurements use a very low distortion sine wave as the source
They are analog measurements.



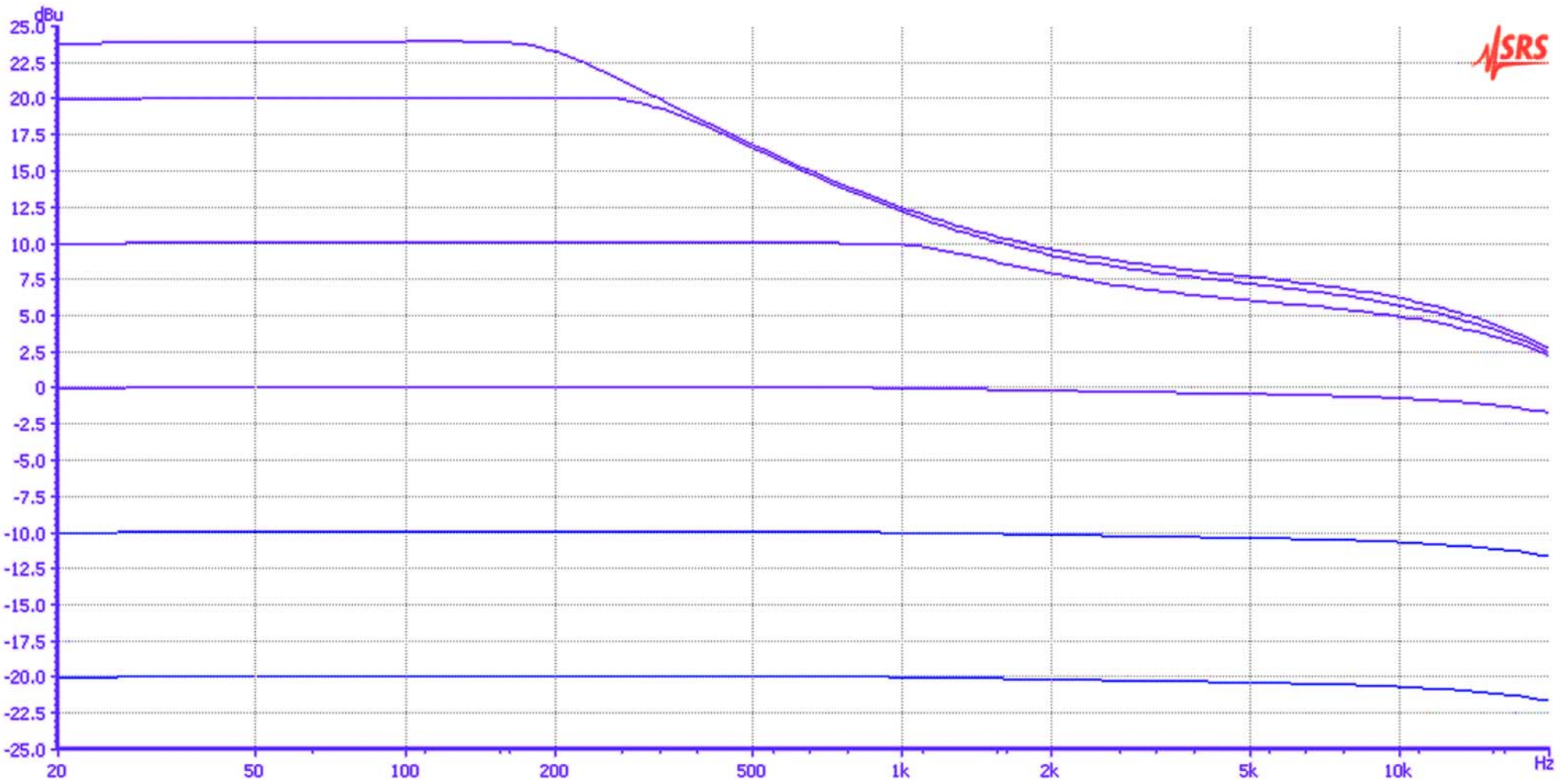
The top wave shape is a vocal recording
The bottom is the same slowed down by the
speed control; this is an extreme case to
show the effect on the wave shape



EVEN HARMONIC DISTORTION WITH LEVEL



ODD HARMONIC DISTORTION WITH LEVEL



FREQUENCY RESPONSE OF WITH THE SPEED CONTROL SET TO 1
NOTE: LOW LEVEL SIGNALS HAVE A NEAR FLAT RESPONSE
HIGH LEVEL SIGNALS ARE CHANGED